

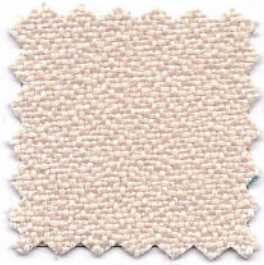
TREKATEX
TEXTILE SOLUTIONS

L  **RENZIA**®
CONTRACT FABRIC

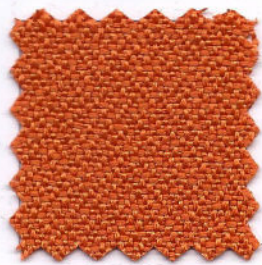
IN - & OUTDOOR FURNITURE FABRICS

Springs

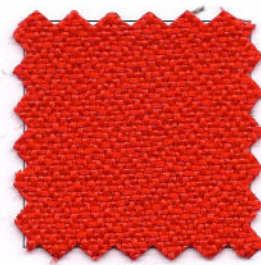
SEATING & SCREEN FABRIC



141



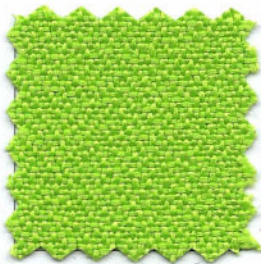
200



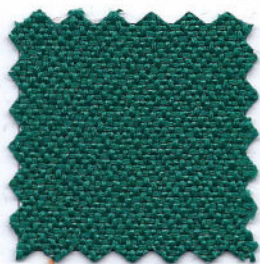
010



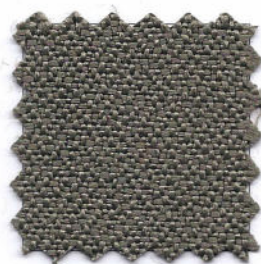
181



022



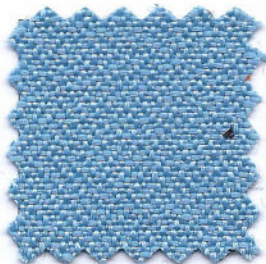
230



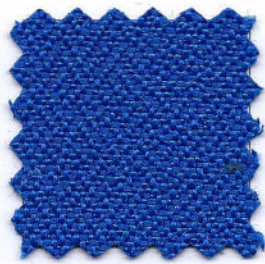
180



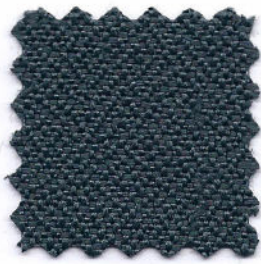
083



171



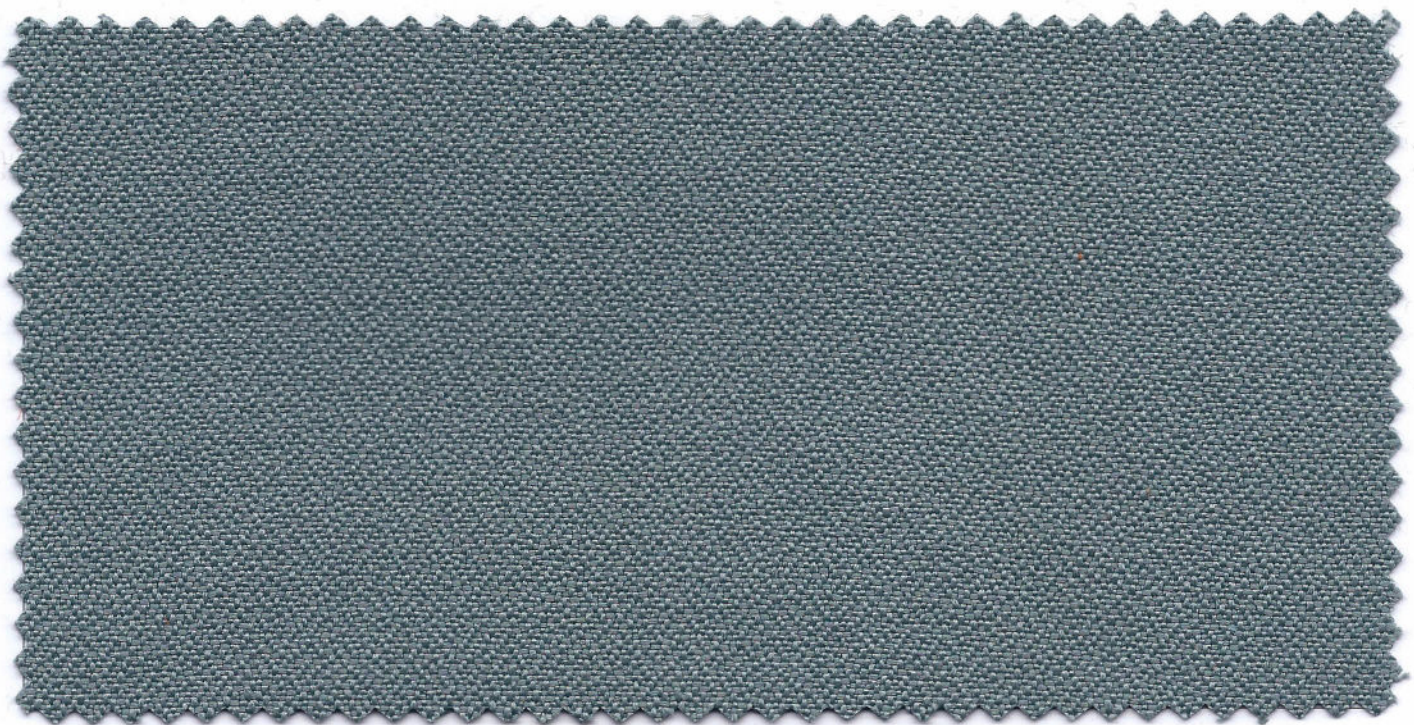
041



163



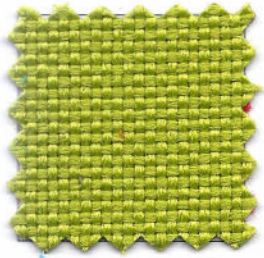
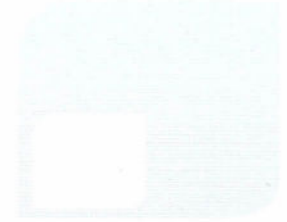
090



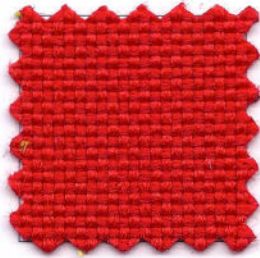
161

Georgia

SEATING & SCREEN FABRIC



020



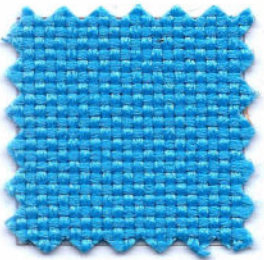
010



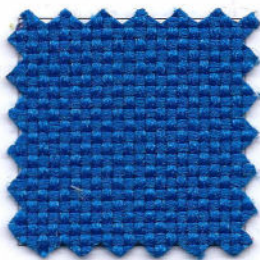
102



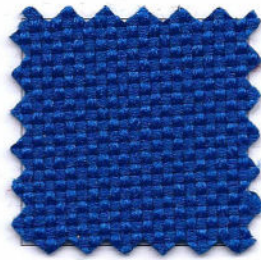
030



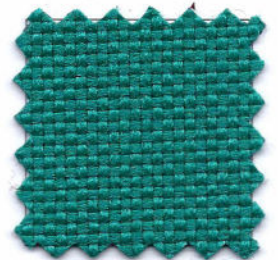
040



042



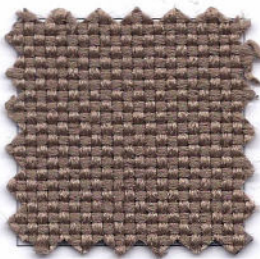
120



233



141



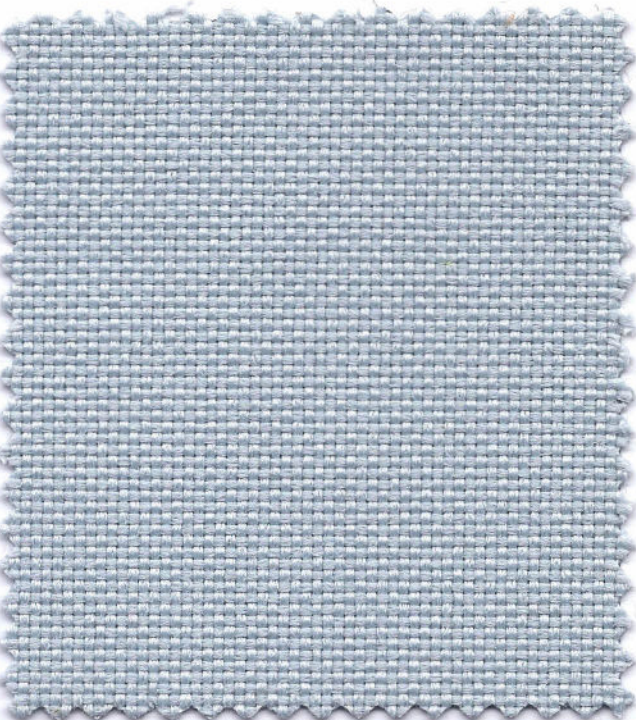
180



080



090



171



081

Design	Georgia	Springs
Composition	100% Polyester	100% Polyester
Weight	507 grams per linear metre $\pm 5\%$	453 grams per linear metre $\pm 5\%$
Width	150 cm $\pm 1\%$ usable	165 cm $\pm 1\%$ usable
Colour Fastness to Light	Meets BS 1006 level 5	Meets BS 1006 : B01 level 5
Colour Fastness to Rubbing	Meets EN ISO 105 - X12 Wet : 4/5 Dry : 4/5	Meets EN ISO 105 - X12 Wet : 4/5 Dry : 4/5
Abrasion Resistance	> 100.000 Rubs (800 gm/12kPa) Martindale	60.000 Rubs (800 g/12kPa) Martindale

Flammability



Complies with

BS EN 1021 - 1 : 2006 (Cigarette)

Tested in combination with UBM foam 32 kg/m³

Maintenance



Vacuum regularly.

Solvent type cleaner can be used for oil-based stain.

Any cleaning agent must be used strictly in accordance with manufacturer's instruction.

Colour match

Batch to batch variation in shade may occur within commercial tolerances.

Note : We reserve the right to alter technical specifications without prior notice